



1



1



1



B

DavidJames
the estate agent

Beech Court, Mapperley, Nottingham, NG3 5PZ

Offers Invited £70,000

About This Property

NO CHAIN - OFFERS INVITED. A one double bedroom first floor apartment for the over 60's (over 55 couples) situated directly opposite the lift. The Kingfisher design is one of the largest within Beech Court which is ideally situated within walking distance of Mapperley's fantastic amenities. There's a spacious lounge/dining room, kitchen with integrated appliances & bathroom/WC as well as access to communal gardens, a residents lounge & laundry room.



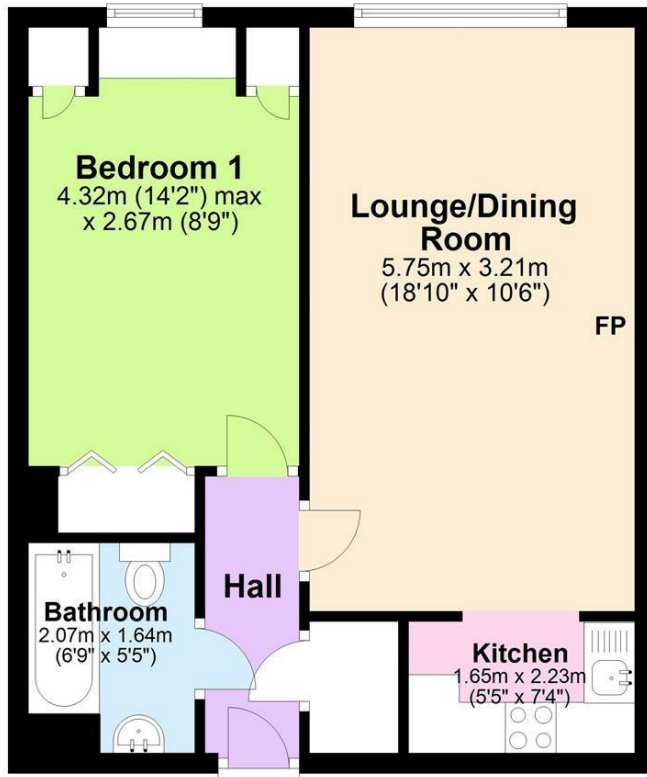
- First floor apartment situated directly opposite the lift
- One of the largest designs occupying a corner plot
- One double bedroom with fitted & in-built wardrobes
- Bathroom/WC with plumbed in shower
- Lounge/dining room. Kitchen with integrated appliances
- Entrance hall with useful store
- Electric heating & UPVC double glazing
- House manager, laundry room & residents lounge
- Communal gardens. Available for the over 60's (over 55 for couples)
- No upward chain



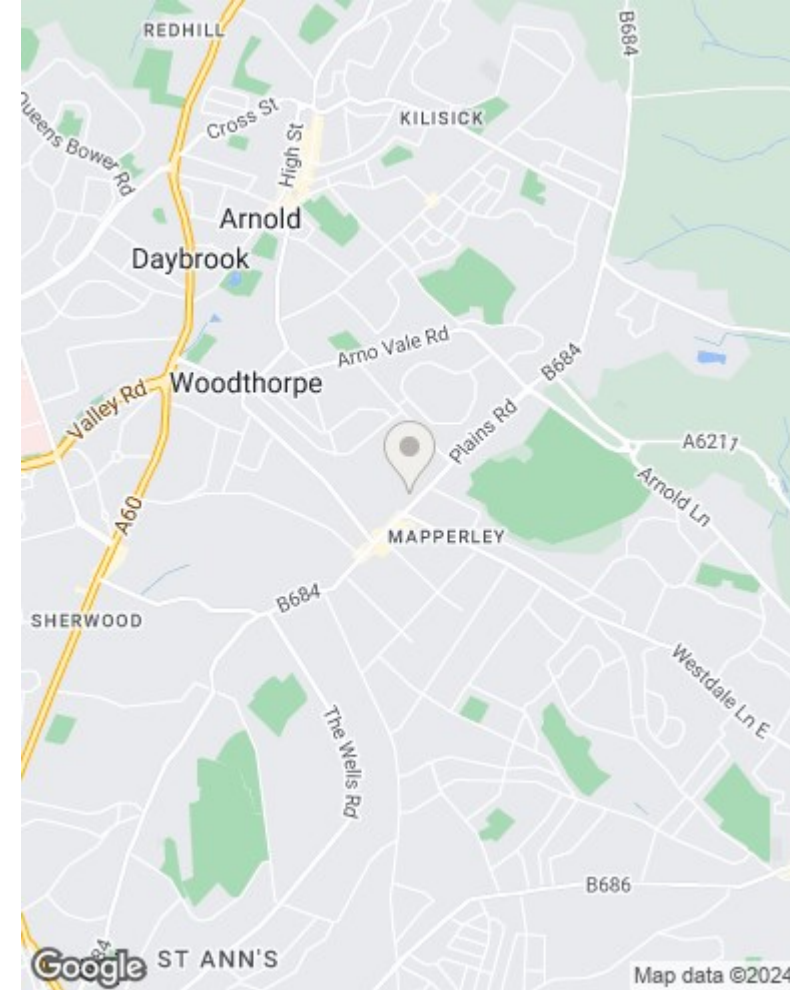


First Floor

Approx. 43.5 sq. metres (468.3 sq. feet)



Total area: approx. 43.5 sq. metres (468.3 sq. feet)



These particulars are produced in good faith, are set out as a general guide only and do not constitute any part of a contract. No person in the employment of David James Estate Agents Ltd has any authority to make any representation whatsoever in relation to the property. All services, together with electrical fittings or fitted appliances have NOT been tested. All the measurements given in the details are approximate. Floor plans are for illustrative purposes only and are not drawn to scale. The position and size of doors, windows, appliances and other features are approximate only. The photographs of this property have been taken with a 10mm wide-angle lens. No responsibility can be accepted for any loss or expense incurred in viewing. If you have a property to sell you may wish to take advantage of our free valuation service. David James Estate Agents have established professional relationships with third-party suppliers for the provision of services to Clients. As remuneration for this professional relationship, the agent receives referral commission from the third-party company. David James Estate Agents receives the following commission from each third party supplier on a per referral basis: W A Barnes Ltd: £60 including VAT. All Moves UK Ltd: 18% including VAT of the invoice total (£107 including VAT average). MoveWithUs Limited: £188 including VAT (average).

Council Tax Band: B
Gedling Borough Council
Leasehold

DavidJames
the estate agent

David James Estate Agents
45b Plains Road, Nottingham, NG3 5JU
t: 0115 962 4213 e: mapperley@david-james.com

naea | propertymark
PROTECTED

The Property
Ombudsman